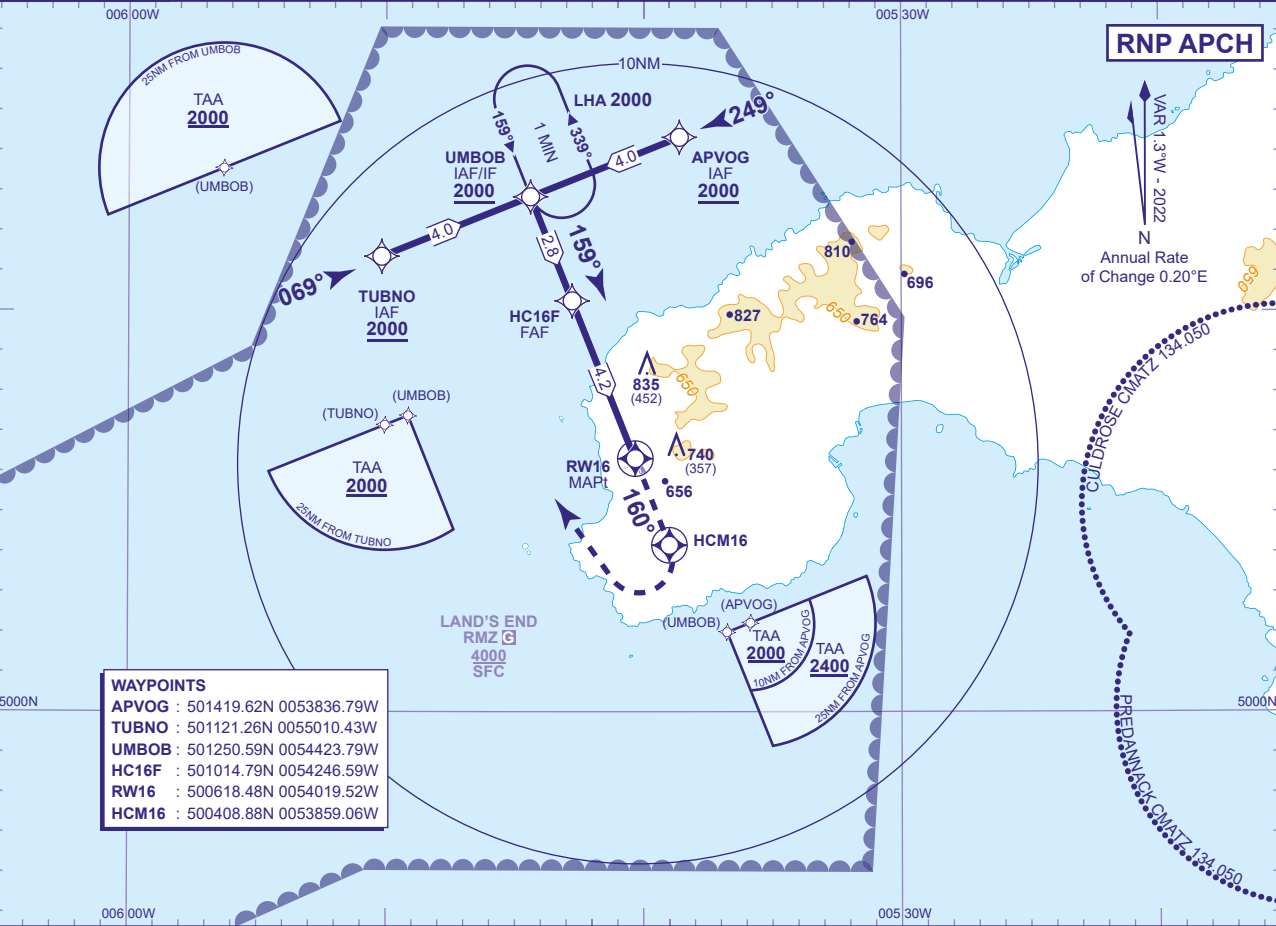


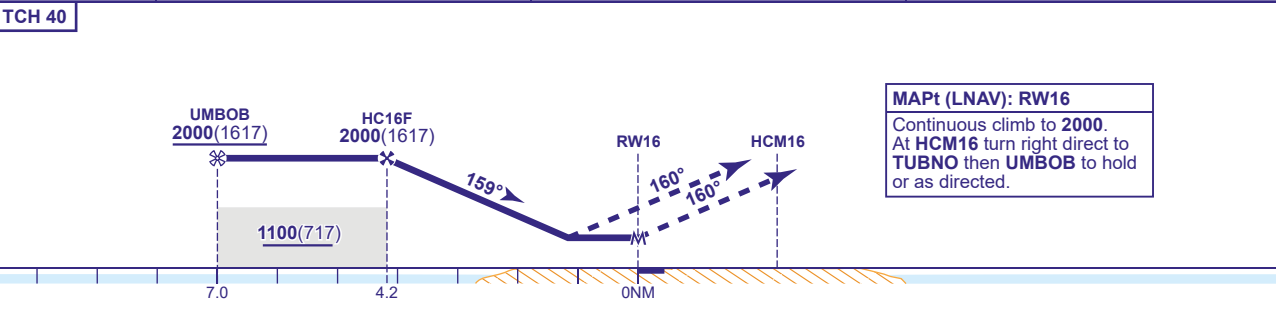
INSTRUMENT APPROACH CHART - ICAO

LAND'S END
RNP
RWY 16
(ACFT CAT A ONLY)

| | | | | |
|---------------------------------------|--------------|------------------------|---|-----------------------------|
| <div>24</div> <div>MSA 25NM ARP</div> | TWR 120.255 | LAND'S END TOWER | AD ELEVATION 398 | TRANSITION ALTITUDE 3000 |
| | ATIS 122.830 | LAND'S END INFORMATION | THR ELEVATION 383 | |
| | | | OBSTACLE ELEVATION 835 AMSL (452) (ABOVE THR) | |
| | | | BEARINGS ARE MAGNETIC | |



| RECOMMENDED PROFILE Gradient 6.12%, 372FT/NM | | | |
|--|------------|------------|-----------|
| NM to RW16 | 4 | 3 | 2 |
| ALT(HGT) | 1900(1517) | 1530(1147) | 1160(777) |



| Aircraft Category | | A | Rate of descent | G/S KT | 160 | 140 | 120 | 100 | 80 |
|--------------------|------------|-----------|-----------------|--------|-----|-----|-----|-----|-----|
| OCA (OCH) | LNAV | 890(507) | | FT/MIN | 990 | 870 | 740 | 620 | 500 |
| VM(C)OCA (OCH AAL) | Total Area | 1040(642) | | | | | | | |

NOTE 1 Use of this RNP procedure is strictly limited to flights authorised by the Aerodrome Authority.
2 Pilots must be appropriately qualified to fly RNP approaches. See EGHC AD 2.20 Para 4.
3 Threshold QFE is available on request.

CHANGE (2/24): ATIS ADDED.